

Hall of Beasties

Take a look under the microscope at some of your pets enemies!

The Sneaky worms!



dog roundworm

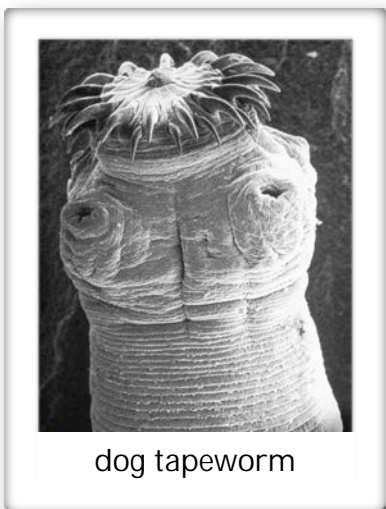


cat roundworm



sticky eggs

- Roundworms can cause a wide range of symptoms in pets ranging from poor body condition to potentially fatal disease. They can also in rarer cases be harmful to children (refer to FAQ's section in the main menu for more information on zoonoses- animal diseases harmful to people)
- Roundworm larvae and eggs are microscopic and will not be visible in the faeces



dog tapeworm



dog tapeworm



dog & cat tapeworm

- Cats who hunt birds and mice will be especially at risk of ingesting tapeworms.
- Fleas ingest tapeworm eggs and can in turn be ingested by cats and dogs.
- cats and dogs can pick up infection from other cats and dogs.



dog lungworm- the new enemy!



..and their victims; the garden snails & **your dog!**

- Slugs and snails can be unwitting carriers of this dangerous canine lungworm, so when your dog eats this chewy garden treat (or even drinks out of a bowl where there has been a snail trail) he gets more than he bargained for!
- The canine lungworm is rapidly increasing in population in Ireland and can cause a range of conditions, the most dangerous of which is a clotting disorder, causing persistent haemorrhage.

- Current veterinary advice is that you worm your cats and dogs every 3 months with a good quality prescription wormer.
- Worms do develop resistance to the older drugs so we have chosen Milbemax as our practice wormer - it is a modern wormer and is highly effective at combatting the worms encountered in Ireland.
- The highly effective advocate prescription 'spot on' can also be used monthly to kill roundworms, fleas and the dangerous canine lungworm.



give them a hand! - worm your pets!



The 'Indestructible' flea!



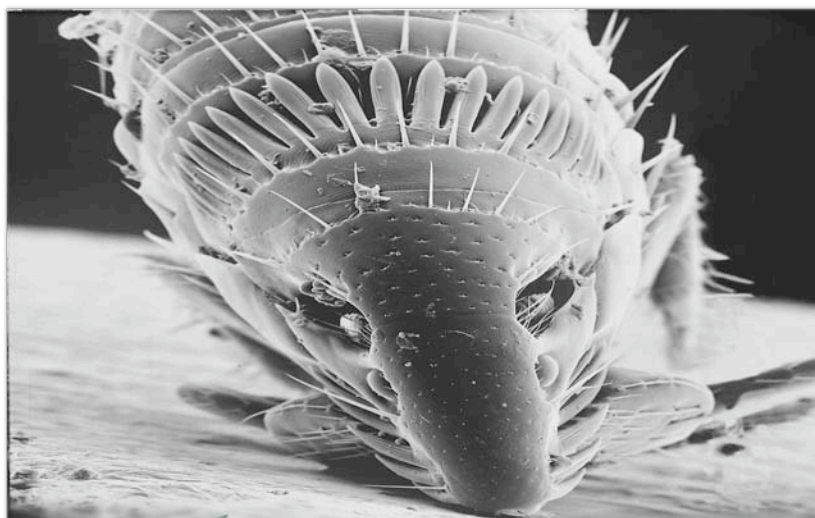
adult flea laying flea egg



larva emerging from flea egg

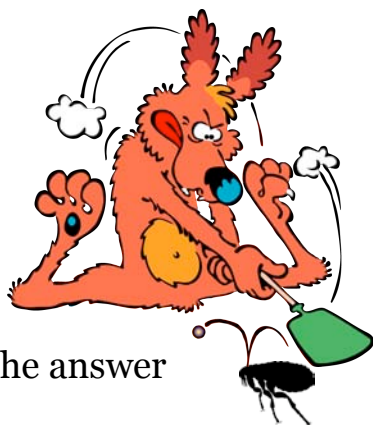


larva will feed & form a cocoon

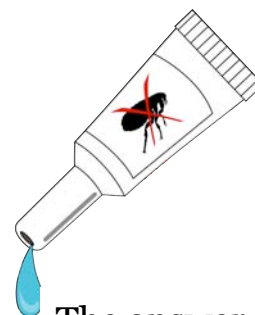


the finished product !

- Flea bites cause the main form of allergic dermatitis in cats and dogs.
- Fleas swallow tapeworm eggs and can pass them on to pets
- Susceptible pets can develop severe anaemia
- Fleas can bite humans although they can't feed from us



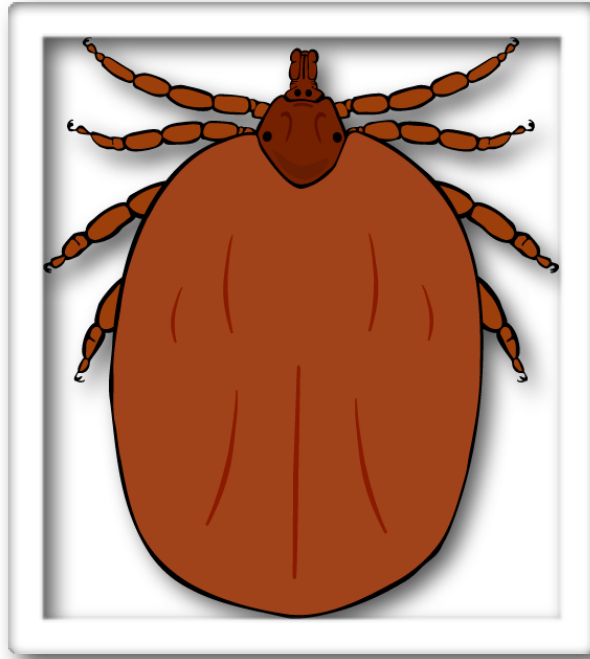
Not the answer



The answer !

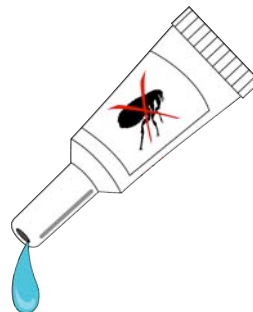
For effective year round flea control use an effective prescription monthly 'spot-on'.
We stock: 'advocate' or 'practic'

The 'ambush' tick!



Ixodes Tick

- Ticks ambush cats and dogs by perching on bushes or grasses and waiting for their intended victim to pass by.
- Ticks attach to the skin to suck blood causing skin irritation. The small wounds caused by their mouth parts often becomes infected
- When they attach in greater numbers, ticks can cause anaemia
- It is suspected that Irish ticks may be starting to transmit diseases which were typically not seen in Ireland before.



The answer !
monthly application of a prescription flea & tick 'spot on' such as Practic or Frontline

Here are some of the products we stock which will help



Dog prescription wormers

'Milbemax'- the modern highly effective prescription wormer tablets for dogs (...and tasty too!)



Prescription cat wormers

'Milbemax'- the modern highly effective prescription wormer tablets for cats (...and tasty too!)



Flea, tick, mite and wormer product (dogs)

Highly effective prescription 'spot-on' for dogs.

'Prac-tic' : prevents fleas and ticks

'Advocate' : prevents fleas, mites and roundworms



Flea, tick, mite and wormer products

Highly effective prescription 'spot-on' for cats.

'Frontline' : prevents fleas and ticks

'Advocate' : prevents fleas, ear mites & roundworms